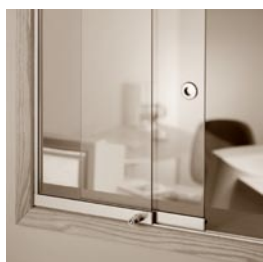




products & solutions

Sliding Door & Window Track





company



Company Info

Savekers Ltd



Our Solutions

With an enviable pedigree and heritage, together with more than 100 years as an established specialist in quality manufacturing, Savekers Ltd offers a level of production and service unrivalled in our field.

Building on the strengths and resource of the founding company, T Saveker Ltd, and through acquisitions and product diversification, we aim to provide an ever-evolving level of customer support through exceptional customer service and skilled bespoke and standard product manufacture.

All aspects of the Company and the skills within, join to collectively meet customer requirements across a range of disciplines and market sectors. These include shopfittings, POS, internet & IT solutions, metalwork, joinery, commercial & business support.

Metalwork Manufacture

Whether the requirement is for standard or bespoke products, for various applications, we are positioned to provide unrivalled products and solutions across a diverse range of architectural metalwork materials and finishes.

Alongside our specialist CAD technical design team, is our comprehensive 45,000 square foot production facility, which spans water jet cutting, CNC machining, NC bending, welding, polishing, general fabrication, anodising and chrome plating.

Our ever-growing portfolio of architectural metalwork products, recognised as one of the most comprehensive in the UK, provides solutions for local authorities, the retail sector, exhibitions, financial institutions, leisure & entertainment, construction – to name but a few.



Joinery Manufacture

As a specialist in the design and manufacture of high quality, stylish bespoke woodworking solutions, we are able to produce functional and beautifully crafted designs across a range of uses, applications and sectors.

Our team of skilled craftsmen are experienced in working with all types of wood - solid wood, real wood, veneer, laminate, and to incorporate glass, metalwork, or solid-surfacing. Furthermore, we operate a strict process of traceability to ensure that we only purchase timber from sustainable forests by sourcing material from registered environmentally friendly sources. Whatever the project nature or size, we will work from existing designs or through working closely with customers, to produce new designs utilising our established in-house CAD designers and facilities. Solutions may include timber reception desks, bars, counters, cabinets, storage units, POS and retail display shelving and furniture.

t +44 (0)121 331 1903
f +44 (0)121 331 1900
e info@savekers.com
w www.savekers.com

Please refer to our standard Terms & Conditions.
Visit our website or contact us for a copy.

Savekers Limited
101 Aldridge Road, Perry Barr,
Birmingham, B42 2TS,
United Kingdom



products



Contents

Sliding Door & Window Track



System Freeslide

System Freeslide is for 6mm glass up to 1.5m high and available in polished aluminium or anodized in gold, silver, bronze or powder coated black. Accessory options are also available.



System Heavislide

System Heavislide is suitable for 10mm glass up to 2.5m high with finishes available in polished aluminium or anodized in gold, silver or bronze or powder coated black. Accessory options are also available.



System Nylonslide 6mm & 10mm

Glass panels slide on nylon rollers which are incorporated into the bottom track with the top of the glass being supported in the top track section. Available in a range of finishes.



System Frameless 6mm

Savekers has a range of frameless sections for 6mm glass to run on. Assorted aluminium finishes are available.



Alternative Locks

A range of various locks suitable for the Savekers Sliding Glass Door Systems are available. Locks can be specified with high security centres and either to differ or to pass. Extra keys can be purchased.



Sliding Door & Window Track

Suitable for either cabinet or hatch fitting, our standard range of sliding glass door track systems can be specified in various sizes and finishes for either 6mm or 10mm glass.

Related Product Ranges

- Pedestrian Guidance
- Counters, Cabinets & Fittings
- Protection Screens
- Leisure Systems

Many of the products illustrated can be manufactured to customers specific size and finish requirements. As manufacturers we are happy to quote against specific requirements on receipt of sketches or drawings.

An on-line catalogue of standard products can be found on our website.

Please also refer to our standard Terms & Conditions. We reserve the right to amend designs & products without prior notification.

Please refer to our Cleaning & Maintenance Guidance sheet.

t +44 (0)121 331 1903
f +44 (0)121 331 1900
e info@savekers.com
w www.savekers.com

Please refer to our standard Terms & Conditions.
Visit our website or contact us for a copy.

Savekers Limited
101 Aldridge Road, Perry Barr,
Birmingham, B42 2TS,
United Kingdom



products



System Freeslide

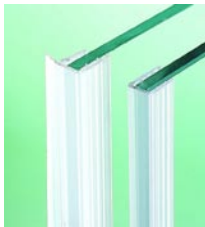
Sliding Glass Door & Window Systems



H439



H31 / H83



H56Q / H60Q



H30



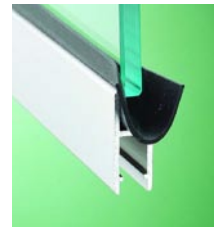
H579 System Freeslide



H579B



H21



H136



H35

Suitable for 6mm glass up to 1.5m high this system is available in polished aluminium or anodised in gold, silver or bronze or black powder coated. Can be supplied in cut lengths up to 4m or in 2m or 4m stock lengths. Glass panels are located with bedding strip into a runner section that incorporates either nylon or steel ball bearing wheels. These wheels run along a neat bottom track while the top of the glass is supported in the top track. This system is suitable for use in display cabinets, showcases or service hatches.

The usual overlap allowed between two glass doors is 26mm. For glass cutting sizes deduct 27mm from the height of the opening. For safety reasons we recommend all glass should have polished edges. Please check with your glass merchant to ensure that the specification of the glass is suitable for the particular installation.

To calculate the length of side channels or draught excluders deduct 47mm from the opening height. The maximum recommended height to width ratio of each door is 2:1.

H21T Single top track/side channels can be used either to guide the top of a single sliding door or for sliding door to locate into at the side of the opening. Alternatively can be used to frame a fixed panel. Supplied drilled and countersunk for fixing. Polished aluminium. Anodised in gold, silver or bronze or black powder coated.

H30 Brush draught excluder clips onto edge of glass panel to prevent draughts and dust. Supplied in 2m or 4m stock lengths or cut lengths up to 4m. Polished aluminium. Anodised in gold, silver or bronze or black powder coated.

H31 Edging channel clips onto glass panel to protect the edge. Supplied in 2m or 4m stock lengths or cut lengths up to 4m. Polished aluminium. Anodised in gold, silver or bronze or black powder coated.

H35 Clip on finger pull. Chrome. Satin Chrome.

H56Q Clear plastic draught excluder clips onto edge of glass panel to prevent draughts and dust. Supplied in 2m or 4m stock lengths or cut lengths up to 4m.

H60Q Clear plastic edging clips onto glass panel to protect the edge. Supplied in 2m or 4m stock lengths or cut lengths up to 4m.

H83 Pull edging channel clips onto glass panel to protect the edge and also provides a full length finger pull. Supplied in 2m or 4m stock lengths or cut lengths up to 4m. Polished aluminium. Anodised in gold, silver or bronze or black powder coated.

H136 Bedding strip helps secure glass firmly into runner section.

H439 Top channel stop block screws into the top track and provides additional security by preventing closed glass panels from being lifted out.



H579A



t +44 (0)121 331 1903
f +44 (0)121 331 1900
e info@savekers.com
w www.savekers.com

Please refer to our standard Terms & Conditions.
Visit our website or contact us for a copy.

Savekers Limited
101 Aldridge Road, Perry Barr,
Birmingham, B42 2TS,
United Kingdom



products



System Freeslide

Sliding Glass Door & Window Systems



H582



H3003Q



H582M



H579E



H579J



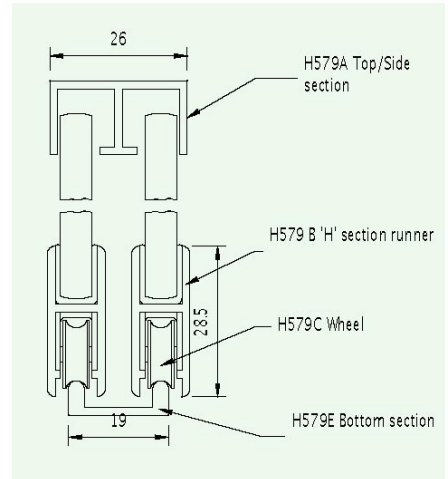
H979K



H927



H579S / H579G



System Freeslide

not to scale

H579A Double top track/side channels can be used either to guide the top of sliding glass doors or for a sliding door to locate into at the side of the opening. Supplied drilled and countersunk for fixing. Polished aluminium. Anodised in gold, silver or bronze or black powder coated.

H579B Runner accommodates the glass panel in the top half and holds the wheels and end stops in the lower section. Polished aluminium. Anodised in gold, silver or bronze or black powder coated.

H579C Steel ball bearing wheels in steel case should be fitted into H579B runner section, one at each end up to 0.3 sq m of glass, two at each end up to 0.7 sq m and three at each end up to 1 sq m. This is for guidance only. The number of wheels required for any individual system will depend also on the size of each door, the supporting structure and frequency of use.

H579D End stop fits into end of runner section. Polished aluminium. Anodised in gold, silver or bronze or black powder coated.

H579E Double bottom track is supplied drilled and countersunk for fixing. Polished aluminium. Anodised in gold, silver or bronze or black powder coated. Please note that colour anodising will wear to silver when in contact with wheels.

H579G End stop with clear PVC buffer fits into end of runner section. Polished aluminium. Anodised in gold, silver or bronze or black powder coated.

H579J Nylon wheels in brass case should be fitted into H579B runner section one at each end up to 0.15 sq m and three at each end up to 0.35 sq m. Non-ferrous unit suitable for cold or damp areas.

H579S Single bottom track is supplied drilled and countersunk for fixing. Polished aluminium. Anodised in gold, silver or bronze or black powder coated. Please note that colour anodising will wear to silver when in contact with wheels.

H582 Large round finger pull fits into 51mm diameter hole drilled in glass. 38mm finger hole. Polished aluminium. Anodised in gold, silver or bronze or black powder coated.

H582M Medium round finger pull fits into 38mm diameter hole drilled in glass. 30mm finger hole. Polished aluminium. Anodised in gold, silver or bronze or black powder coated.

H927 Security plunger lock fits onto front runner section which must be drilled to template supplied for fitting. Can be supplied either to pass or differ from 80 differs available. Supplied with two keys. Also available with standard centre as H527 with 10 differs available. Polished aluminium. Anodised in gold, silver or bronze or black powder coated. Chrome plated barrel.

H979K Security end lock replaces end stop in runner section and is available either right or left handed. Can be supplied either to pass or differ from 80 differs available. Also available with standard centre as H579K with 10 differs available. Polished aluminium. Anodised in gold, silver or bronze or black powder coated. Chrome plated barrel.

H3003Q Round finger pull fits into 29mm diameter hole drilled in glass. 18mm finger hole. Polished aluminium. Anodised in gold, silver or bronze or black powder coated.

t +44 (0)121 331 1903
f +44 (0)121 331 1900
e info@savekers.com
w www.savekers.com

Please refer to our standard Terms & Conditions.
Visit our website or contact us for a copy.

Savekers Limited
101 Aldridge Road, Perry Barr,
Birmingham, B42 2TS,
United Kingdom



products



System Heavislide

Sliding Glass Door & Window Systems



Suitable for 10mm glass up to 2.5m high this system is available in polished aluminium. Anodised in gold, silver or bronze or black powder coated. Can be supplied in cut lengths up to 4m or in 2m or 4m stock lengths. Glass panels are located with bedding strip into a runner section that incorporates steel ball bearing wheels. These wheels run along a neat bottom track while the top of the glass is supported in the top track. This system is suitable for use in display cabinets, showcases or serving hatches where 10mm glass or taller doors are required.

The usual overlap allowed between the two glass doors is 26mm. For glass cutting sizes deduct 45mm from the height of the opening. For safety reasons we recommend all glass should have polished edges. Please check with your glass merchant to ensure the specification of the glass is suitable for the particular installation.

To calculate the length of side channels or draught excluders deduct 76mm from the height of the opening. The maximum recommended height to width ratio of each door is 2:1.

H41 Brush draught excluder clips onto edge of glass panel to prevent draughts and dust. Supplied in cut lengths up to 2.5m. Polished aluminium. Anodised in gold, silver or bronze or black powder coated.

H42 Edging channel clips onto glass panel to protect the edge. Supplied in cut lengths up to 2.5m. Polished aluminium. Anodised in gold, silver or bronze or black powder coated.

H55 Self adhesive foam strip fits into side channel to act as a buffer.

H56T Clear plastic draught excluder clips onto edge of glass panel to prevent draughts and dust. Supplied in 2m or 4m stock lengths or cut lengths up to 4m.

H60T Clear plastic edging clips onto edge of glass panel to prevent draughts and dust. Supplied in 2m or 4m stock lengths or cut lengths up to 4m.

H141 Bedding strips help secure glass firmly into runner section.

H163 Pull edging channel clips onto glass panel to protect the edge and also provides a full length finger pull. Polished aluminium. Anodised in gold, silver or bronze or black powder coated.

H346A Double top track/side channels can be used to guide the top of sliding glass doors or for a single door to locate into at the side of the opening. Supplied drilled and countersunk for fixing. Polished aluminium. Anodised in gold, silver or bronze or black powder coated.

H346B Runner accommodates the glass panel in the top half and holds the wheels and end stop in the lower section. Polished aluminium. Anodised in gold, silver or bronze or black powder coated.

H346C Steel ball bearing wheels in steel case should be fitted into H346B runner section one at each end up to 0.6 sq m of glass, two at each end up to 1 sq m and three at each end up to 1.5 sq m. This is for guidance only. The number of wheels required for any individual system will depend also on the size of each door, the supporting structure and the frequency of use.

t +44 (0)121 331 1903
 f +44 (0)121 331 1900
 e info@savekers.com
 w www.savekers.com

Please refer to our standard Terms & Conditions.
 Visit our website or contact us for a copy.

Savekers Limited
 101 Aldridge Road, Perry Barr,
 Birmingham, B42 2TS,
 United Kingdom



products



System Heavislide

Sliding Glass Door & Window Systems



H346S



H422



H359



H359M



H346E



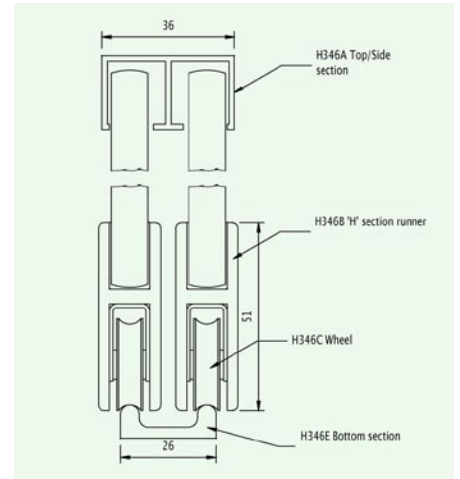
H346G / H346D



H976



H3003T



System Heavislide

not to scale

H346D End stop fits into end of runner section. Polished aluminium. Anodised in gold, silver or bronze or black powder coated.

H346E Double bottom track is supplied drilled and countersunk for fixing. Polished aluminium. Anodised in gold, silver or bronze or black powder coated. Please note that colour anodising will wear to silver where in contact with wheels.

H346G End stop with clear PVC buffer fits into runner section. Polished aluminium. Anodised in gold, silver or bronze or black powder coated.

H346S Single bottom track is supplied drilled and countersunk for fixing. Polished aluminium. Anodised in gold, silver or bronze or black powder coated. Please note that colour anodising will wear to silver where in contact with wheels.

H359 Large round finger pull fits into 51mm diameter hole drilled in glass. 38mm finger hole. Polished aluminium. Anodised in gold, silver or bronze or black powder coated.

H359M Medium round finger pull fits into 38mm diameter hole drilled in glass. 25mm finger hole. Polished aluminium. Anodised in gold, silver or bronze or black powder coated.

H436 Single top track/side channels can be used either to guide the top of a single sliding door or for a sliding door to locate into at the side of the opening. Alternatively can be used to frame a fixed panel. Supplied drilled and countersunk for fixing. Polished aluminium. Anodised in gold, silver or bronze or black powder coated.

H976 Security plunger lock fits onto front runner section. Can be supplied either to pass or to differ from 80 differs available. Supplied with two keys. Also available with standard centre as H76 with 10 differs available. Chrome. Satin Chrome.

H3003T Round finger pull fits into 29mm diameter hole drilled in glass. 18mm finger hole. Polished aluminium. Anodised in gold, silver or bronze or black powder coated.

t +44 (0)121 331 1903
f +44 (0)121 331 1900
e info@savekers.com
w www.savekers.com

Please refer to our standard Terms & Conditions.
Visit our website or contact us for a copy.

Savekers Limited
101 Aldridge Road, Perry Barr,
Birmingham, B42 2TS,
United Kingdom

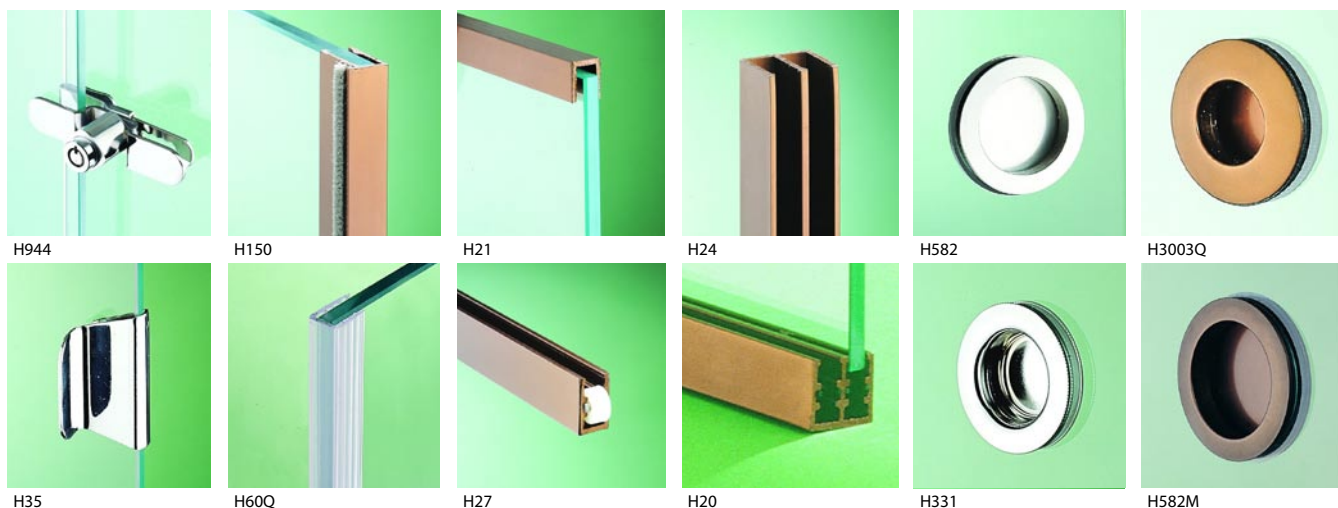


products



System Nylonslide 6mm

Sliding Glass Door & Window Systems



Suitable for 6mm glass up to 1.5m high this system is available in polished aluminium. Anodised in gold, silver or bronze or black powder coated. Can be supplied in cut lengths up to 4m or in 2m or 4m stock lengths.

Glass Panels slide on nylon rollers which are incorporated into the bottom track while the top of the glass is supported in the top track. This system is suitable for use in display cabinets, showcases or serving hatches.

The usual overlap allowed between two glass doors is 26mm. For glass sizes deduct 22mm from the height of the opening.

For safety reasons we recommend all glass should have polished edges. Please check with your glass merchant to ensure that the specification of the glass is suitable for the particular installation.

For side channels or draught excluders deduct 38mm from the height of the opening. The maximum recommended height to width ratio per door is 1.5:1.

H20 Double bottom track incorporates nylon rollers on which the glass panels run. Supplied drilled and countersunk for fixing. Polished aluminium. Anodised in gold, silver or bronze or black powder coated.

H21T Single top track/side channels can be used either to guide the top of a single sliding door or for a sliding door to locate in to at the side of the opening. Alternatively can be used to frame a fixed panel. Supplied drilled and countersunk for fixing. Polished aluminium. Anodised in gold, silver or bronze or black powder coated.

H24 Double top track/side channels can be used either to guide the top of sliding glass doors or for a sliding door to locate into at the end of the opening. Supplied drilled and countersunk for fixing. Polished aluminium. Anodised in gold, silver or bronze or black powder coated.

H27 Single bottom track incorporates nylon rollers on which the glass panel runs. Supplied drilled and countersunk for fixing. Polished aluminium. Anodised in gold, silver or bronze or black powder coated.

H35 Clip on finger pull. Chrome. Satin Chrome.

H60Q Clear plastic edging clips onto glass panel to protect the edge. Supplied in 2m or 4m stock lengths or cut lengths up to 4m.

H150 Brush draught excluder clips onto edge of glass panel to prevent draughts and dust. Supplied in 2m or 4m stock lengths or cut lengths up to 4.025m. Polished aluminium. Anodised in gold, silver or bronze or black powder coated.

H155 Clear plastic draught excluder clips onto edge of glass panel to prevent draughts and dust. Supplied in 2m or 4m stock lengths or cut to lengths up to 4m.

H331 Round finger pull fits into 22mm diameter hole drilled in glass. 15mm finger hole. Chrome. Satin Chrome.

H582 Large round finger pull fits into 51mm diameter hole drilled in glass. 38mm finger hole. Polished aluminium. Anodised in gold, silver or bronze or black powder coated.

H582M Medium round finger pull fits into 38mm diameter hole drilled in glass. 30mm finger hole. Polished aluminium. Anodised in gold, silver or bronze or black powder coated.

t +44 (0)121 331 1903
f +44 (0)121 331 1900
e info@savekers.com
w www.savekers.com

Please refer to our standard Terms & Conditions.
Visit our website or contact us for a copy.

Savekers Limited
101 Aldridge Road, Perry Barr,
Birmingham, B42 2TS,
United Kingdom



products



System Nylonslide 10mm

Sliding Glass Door & Window Systems



H60T / H56T



H359M



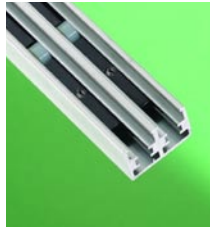
H436



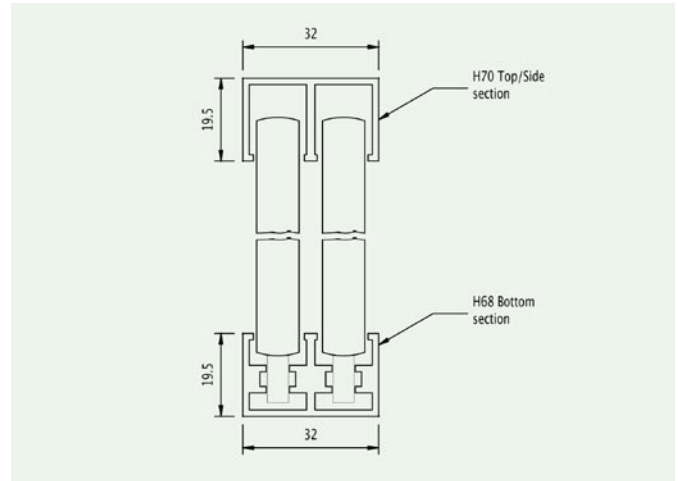
H557



H359



H68



System Nylonslide

not to scale

Suitable for glass up to 1.5m high this system is available in polished aluminium. Anodised in gold, silver or bronze or black powder coated. Can be supplied in cut lengths up to 4m or in 2m or 4m stock lengths. Glass panels slide on nylon rollers which are incorporated into the bottom track while the top of the glass is supported in the top track. This system is suitable for use in display cabinets, showcases or serving hatches where 10mm glass is required.

The usual overlap allowed between two glass doors is 26mm. For glass sizes deduct 24mm from the height of the opening. For safety reasons we recommend all glass should have polished edges. Please check with your glass merchant to ensure that the specification of the glass is suitable for the particular installation.

For side channels or draught excluders deduct 40mm from the height of the opening. The maximum recommended height to width ratio per door is 1.5:1.

H60T Clear plastic edging clips onto glass panel to protect the edge. Supplied in 2m or 4m stock lengths or cut lengths up to 4m.

H68 Double bottom track incorporates nylon rollers on which the glass panels run. Supplied drilled and countersunk for fixing. Polished aluminium. Anodised in gold, silver or bronze or black powder coated.

H70 Double top track/side channels can be used either to guide the top of sliding glass doors or for a sliding glass door to locate into at the side of an opening. Supplied drilled and countersunk for fixing. Polished aluminium. Anodised in gold, silver or bronze or black powder coated.

H359 Large round finger pull fits into 51mm diameter hole drilled in glass. 38mm finger hole. Polished aluminium. Anodised in gold, silver or bronze or black powder coated.

H359M Medium round finger pull fits into 38mm diameter hole drilled in glass. 25mm finger hole. Polished aluminium. Anodised in gold, silver or bronze or black powder coated.

H436 Single top track/side channels can be used for a sliding door to locate into at the side of the opening. Alternatively can be used to frame a fixed panel. Supplied drilled and countersunk for fixing. Polished aluminium. Anodised in gold, silver or bronze or black powder coated.

H557 Clear plastic draught excluder clips onto edge of glass panel to prevent draughts and dust. For use with G68/G70 track. Supplied in 2m or 4m stock lengths or cut lengths up to 4m.



H70

t +44 (0)121 331 1903
f +44 (0)121 331 1900
e info@savekers.com
w www.savekers.com

Please refer to our standard Terms & Conditions.
Visit our website or contact us for a copy.

Savekers Limited
101 Aldridge Road, Perry Barr,
Birmingham, B42 2TS,
United Kingdom



products



Other Frameless 6mm

Sliding Glass Door & Window Systems



H22 / H23 / H225 / H254



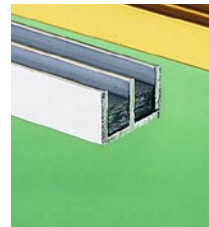
H1718



H23



H225



H22



H254

H22 Double aluminium track with rigid pvc insert in the bottom section on which the polished edge glass slides. For 6mm glass. Also available as single track H21. Polished aluminium. Anodised in gold, silver or bronze or black powder coated.

H23 Light pattern aluminium double track with rigid pvc insert in the bottom section on which the polished edge glass slides. For 6mm glass. NB as the gap between the glass panels is only 1.5mm this section is not suitable for use with lock or finger pulls. Polished aluminium. Anodised in gold, silver or bronze or black powder coated.

H225 Rigid black pvc double track may be used with H1718 rollers in bottom section. For 6mm glass. This can also be used as a double top track in conjunction with H254.

H254 Rigid black pvc double bottom track. For 6mm glass.

H1718 Nylon wheel rollers 150mm long hook together for glass to slide on in H24 or H225 bottom tracks. The wheels should fill 75% of the bottom track to work effectively.



System Nylonslide for 6mm glass

t +44 (0)121 331 1903
 f +44 (0)121 331 1900
 e info@savekers.com
 w www.savekers.com

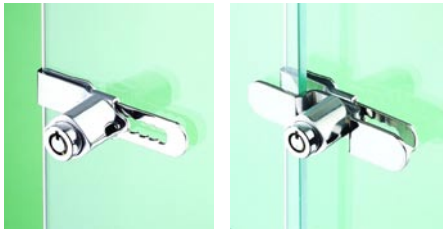
Please refer to our standard Terms & Conditions.
 Visit our website or contact us for a copy.

Savekers Limited
 101 Aldridge Road, Perry Barr,
 Birmingham, B42 2TS,
 United Kingdom



Alternative Locks

Sliding Glass Door & Window Systems



H937

H944



H472



H555R / H955



H617 / H617K



H955



H965



H995

These locks are suitable for most sliding glass door systems. Most lock centres can be replaced without changing the entire lock (H910). Locks are supplied with two keys unless otherwise stated. Extra security keys are available (H945). Extra standard keys are available (H2995K).

H472 Ratchet lock to clip over back panel of glass up to 8mm thick. Lock body slides off to unlock the door. With simple three disc action. Supplied all to differ only. Chrome.

H555R Spacer rings used to project the lock forwards where there is an unusually large gap between the sliding glass door panels. Widths can be specified 3mm, 6mm or 9mm. Chrome. Satin Chrome.

H617 Plunger lock fits into 25mm diameter hole drilled in front glass. For 6mm glass only. Should be fitted close to top or bottom of the door. With spring loaded shoot. One key per lock, additional keys (H617K) can be ordered. Supplied all to pass only. Chrome. Satin Chrome.

H937 Clip on security lock. Lock body slides off to unlock doors. Glass overlap should be between 25mm (min) and 56mm (max). For 6mm or 10mm thick glass. Can be supplied either to pass or to differ from, 80 differs available. Chrome. Satin Chrome.

H944 Clip on security lock with front clip to hook over front glass to prevent panels being sprung apart. Glass overlap should be between 20mm (min) and 51mm (max). For 6mm thick glass only. Can be supplied either to pass or to differ from 80 differs available. Also available with standard centre (H144) with 10 differs available, Chrome, Satin Chrome.

H955 Security lock fits into 22mm diameter hole drilled into black glass. Can be supplied either to pass or to differ from, 80 differs available. Also available with standard centre (H555) with 10 differs available. Chrome. Satin Chrome.

H965 Security plunger lock fits into 25mm diameter hole drilled into front glass. Can be supplied either to pass or to differ from 80 differs available. Also available with standard centre (H465) with 10 differs available. This lock is not suitable for use with Heavislide. Chrome. Satin Chrome.

H995 Security plunger lock fits into 29mm diameter hole drilled in front glass. Can be supplied either to pass or to differ from 80 differs available. Can be supplied to suit doors up to 20mm thick. Available with standard shoot (10mm projection when locked and flush when unlocked) or long shoot (17mm projection when locked and 8mm when unlocked). Also available with standard centre (H2995) with 10 differs available. Chrome. Satin Chrome.

Ranges Available



Sliding Door & Window Track

A range of sliding glass door track systems for either 6mm or 10mm glass.



Retail Systems

Flexible and interchangeable options for POS, storage and product display.



Counters, Cabinets & Fittings

Full display units through to accessories and complementary components.



Shelving Systems

Unobtrusive and flexible solutions for display and storage purposes.



Pedestrian Guidance & Barriers

Functional and durable systems providing solutions for queuing and restricting access.



Balustrades & Handrails

Floor fixing and side mounted balustrading systems and co-ordinating handrails and accessories.



Leisure Range

Traditional and contemporary products and furniture designed for hotel and leisure sectors.



Disability Range

A range of fittings and accessories in compliance with the DDA 2004.



Door Furniture & Window Guards

Providing decorative and practical solutions in a variety of finishes and design themes.



Protection Screens

Protection Screen systems that provide appropriate security when cashiers or staff require it.

Please contact our Sales team for further information, technical assistance or to discuss any requirements.

Savekers Limited

101 Aldridge Road, Perry Barr, Birmingham, B42 2TS United Kingdom

t +44 (0)121 331 1903 f +44 (0)121 331 1900 e info@savekers.com w www.savekers.com